



These are the terms that I will be using in the instructions. Refer to this picture for help while going through the instructions.

Instructions:

a) Prepare the fabric pieces

- ✿ Always iron fusible fleece and fusible interfacing onto the wrong side of the fabric. Ensure all fusible fleece is free of the 1 cm (3/8") seam allowance.

If you use By Annie's Soft and Stable for this project (or other non-fusible interfacing) baste it to the wrong sides of the fabric using a 0.5 cm (3/16") seam allowance, to make sure it stays in place.

Interface fusible fleece to:

- ✿ 2 x exterior main body
- ✿ 1 x exterior flap (cut with pattern piece #2)
- ✿ 1 x exterior side panel

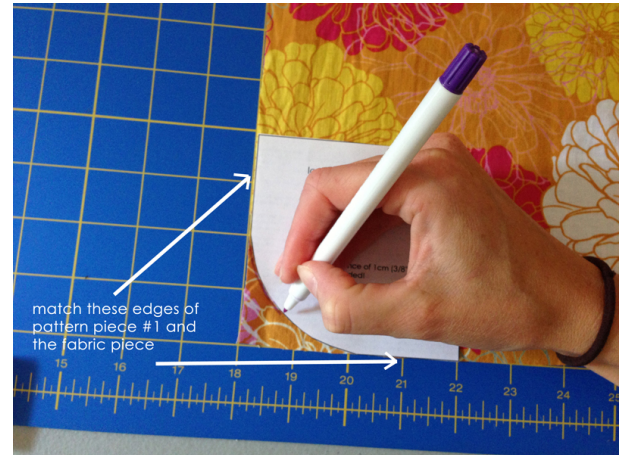
Interface fusible interfacing to:

- ✿ 2 x lining main body
 - ✿ 2 x lining middle pocket
 - ✿ 1 x lining front pocket
 - ✿ 1 x lining flap (cut with pattern piece #2)
 - ✿ 1 x lining side panel
 - ✿ 2 x strap extender
 - ✿ 1 x strap
- (Place the piece of fusible interfacing for the strap centered onto the wrong side of the strap fabric piece and iron – see picture on the right side)*



- ✿ Use pattern piece #1 to transfer the corner outlines onto the bottom edges of the following fabric pieces:
 - 2 x exterior main body
 - 2 x lining main body
 - 2 x middle pocket
 - 2 x front pocket

Use the picture on the right side to see the proper positioning of pattern piece #1.



- ✿ Cut off the fabric along this marking and discard the scraps. Repeat for all bottom corners of all fabric pieces mentioned above.

b) Make the piping

Helpful hint: I recommend using a piping foot for this step. If you don't have a piping foot you can also use your zipper foot for a neat result.

- ✿ Cut four pieces of cotton filler cord for the piping:
 - 1 x 42 cm (16.5") length
 - 2 x 19 cm (7.5") length
 - 1 x 95 cm (38") length
- ✿ Start with one of your piping fabric pieces and the respective cotton filler cord: Place your cotton filler cord centered onto the wrong side of your piping fabric piece. Close the fabric, so that the cord is hidden in between and the long edges of the fabric piece are aligned. Make sure the cord sits snug against the fold of the fabric and pin in place.



- ✿ Now replace your regular sewing foot with your piping foot and place the fabric underneath the sewing foot, so that the cord is "covered" by the groove of the piping foot. If your sewing machine has various needle position options, position the needle approx. 0.3 cm (1/8") to the right of the edge of the cord, then stitch along the edge of the piping.
- ✿ Repeat the two previous steps for your remaining three piping fabric pieces and the respective cotton filler cord pieces.